

ELECTRICAL COMPONENT LOCATOR

2001 Chevrolet Camaro

2001 GENERAL MOTORS
Camaro & Firebird

BUZZERS, RELAYS & TIMERS

BUZZERS, RELAYS & TIMERS LOCATION

Component	Location
A/C Compressor Relay	In underhood fuse block (bottom).
Air Pump Relay	In underhood fuse block (bottom).
Air Solenoid Relay	In underhood fuse block (bottom).
Blower Motor Relay	Center of dash, on inflatable restraint dash module bracket.
Coolant Fan Relays (3)	In underhood fuse block (top).
Defogger Timer/Relay (Rear)	In HVAC control.
Fog Lamp Relay	In underhood fuse block (top).
Folding Top Relay	Behind right side of dash.
Fuel Pump Relay	In underhood fuse block (bottom).
Horn Relay	In underhood fuse block (top).
IGN relay	In underhood fuse block (bottom).
Rear Compartment Lid Release Relay	Behind left side of dash.
Starter Relay	In underhood fuse block (bottom).
Theft Deterrent Relay	Center of dash, on inflatable restraint dash module bracket.

CIRCUIT PROTECTION DEVICES

CIRCUIT PROTECTION DEVICES LOCATION

Component	Location
A/T Shift Lock Control Solenoid Diode	Near body control module, taped to harness.
Fusible Links	Behind underhood fuse block (bottom).
I/P Fuse Block	Behind left side of dash. See Fig. 7.
Underhood Fuse Block (Bottom)	In left front corner of engine compartment.
Underhood Fuse Block (Top)	In left front corner of engine compartment.

Windshield Wiper Isolation Diode	Behind left side of dash, near ignition switch connector.
----------------------------------	---

CONTROL UNITS

CONTROL UNITS LOCATION

Component	Location
Accelerator & Servo Control Module	Under left side of dash, near kick panel.
Amplifier (Radio)	Behind right rear quarter inner trim panel.
Body Control Module (BCM)	Under right side of dash, near blower motor. See Fig. 8.
Cruise Control Module	In engine compartment, on left frame rail, forward of wheelwell.
Daytime Running Lamps (DRL) Module	Mounted behind radio and HVAC controls, left of glove box. See Fig. 7.
Diode Module	Behind rear fog light switch, taped to harness.
Electronic Brake Control Module (EBCM)	On top of left front frame rail.
Electronic Ignition Control Module (ICM) (3.8L VIN K)	At front end of left cylinder head. See Fig. 1.
Electronic Ignition Control Module (ICM) (5.7L VIN G)	At each ignition coil.
Hazard Flasher Module	Behind dash, to left of steering column. See Fig. 7.
Headlamp Opening Door Actuator Control Module (Firebird)	In engine compartment, forward of left wheelwell.
HVAC Module	Behind right side of dash, left of blower motor. See Fig. 8.
Inflatable Restraint Sensing & Diagnostic Module (SDM)	Below rear of console.
Power Seat Cushion Air Control Module	Under driver's seat.
Powertrain Control Module (PCM) (3.8L VIN K)	In engine compartment, behind right strut tower.
Powertrain Control Module (PCM) (5.7L VIN G)	In engine compartment, behind right strut tower.
Power Window Control Module	On center of dash mat, above floor tunnel.

Throttle Actuator Control (TAC) Module (3.8L VIN K)	On accelerator pedal bracket.
Turn Signal Flasher Module	Behind dash, to right of steering column. See Fig. 7.

MOTORS

MOTORS LOCATION

Component	Location
Blower Motor	Behind right side of instrument panel. See Fig. 8.
Convertible Top Pump Assembly	Left side rear compartment, behind carpeting.
Cooling Fan (2)	Behind radiator, in engine compartment.
Fuel Pump	Integral to fuel sender assembly, in fuel tank.
Idle Air Control (IAC) Valve (5.7L VIN G)	On throttle body. See Fig. 3.
Power Antenna Assembly	Near right rear wheelwell.
Secondary Air Injection Pump (5.7L VIN G)	In engine compartment, on left front frame rail.
Windshield Washer Pump	Front of vehicle, forward of radiator support.
Windshield Wiper Motor	Rear of left shock tower, mounted to dash panel, below left wiper mount.

SENDING UNITS & SENSORS

SENDING UNITS & SENSORS LOCATION

Component	Location
A/C Refrigerant Pressure Sensor	Above right front wheelwell, attached to refrigerant line.
Brake Fluid Level Indicator Sensor	In master cylinder.
Camshaft Position (CMP) Sensor (3.8L VIN K)	In engine front cover. See Fig. 2.
Camshaft Position (CMP) Sensor (5.7L VIN G)	On top center rear of engine. See Fig. 4.
Crankshaft Position (CKP) Sensor (3.8L VIN K)	Lower front of engine. See Fig. 2.

Crankshaft Position (CKP) Sensor (5.7L VIN G)	On right rear of engine, behind starter. See Fig. 5.
Daytime Running Lamps (DRL) Ambient Light Sensor	On top of dash, near defrost grille.
Engine Coolant Temperature (ECT) Sensor (3.8L VIN K)	Below throttle body, at front of engine. See Fig. 2.
Engine Coolant Temperature (ECT) Sensor (5.7L VIN G)	On lower left side of engine, above generator. See Fig. 3.
Engine Oil Pressure Sensor (3.8L VIN K)	On lower right front of engine. See Fig. 2.
Engine Oil Pressure Sensor (5.7L VIN G)	On top rear of engine, near left cylinder head. See Fig. 4.
Fuel Level Sensor	Integral to fuel sender assembly, in fuel tank.
Fuel Tank Pressure Sensor	Integral to fuel sender assembly, in fuel tank.
Heated Oxygen Sensor (HO2S) Bank 1 Sensor 1 (3.8L VIN K)	Mounted in left exhaust manifold. See Fig. 1.
Heated Oxygen Sensor (HO2S) Bank 1 Sensor 1 (5.7L VIN G)	Mounted in left exhaust manifold. See Fig. 3.
Heated Oxygen Sensor (HO2S) Bank 1 Sensor 2 (3.8L VIN K)	Mounted at rear of catalytic converter.
Heated Oxygen Sensor (HO2S) Bank 1 Sensor 2 (5.7L VIN G)	Mounted at rear of left catalytic converter.
Heated Oxygen Sensor (HO2S) Bank 2 Sensor 1 (3.8L VIN K)	Mounted in right exhaust manifold. See Fig. 2.
Heated Oxygen Sensor (HO2S) Bank 2 Sensor 1 (5.7L VIN G)	Mounted in right exhaust manifold.
Heated Oxygen Sensor (HO2S) Bank 2 Sensor 2 (5.7L VIN G)	Mounted at rear of right catalytic converter.
Intake Air Temperature (IAT) Sensor (3.8L VIN K)	On air intake duct, forward of intake manifold.
Intake Air Temperature (IAT) Sensor (5.7L VIN G)	On air intake duct, forward of intake manifold. See Fig. 6.
Knock Sensor (Left) (3.8L VIN K)	On left side of cylinder block.
Knock Sensor (Right) (3.8L VIN K)	On right side of cylinder block.
Knock Sensor (2) (5.7L VIN G)	On center of engine, below intake manifold.
Manifold Absolute Pressure (MAP) Sensor (3.8L VIN K)	On right side of intake manifold. See Fig. 1.

Manifold Absolute Pressure (MAP) Sensor (5.7L VIN G)	On rear of intake manifold. See Fig. 4.
Mass Airflow (MAF) Sensor (3.8L VIN K)	In air duct, in front of intake manifold.
Mass Airflow (MAF) Sensor (5.7L VIN G)	In air duct, in front of intake manifold. See Fig. 6.
Theft Deterrent Shock Sensor	Mounted in right rear quarter panel.
Throttle Position (TP) Sensor (3.8L VIN K)	On throttle body.
Throttle Position (TP) Sensor (5.7L VIN G)	On throttle body. See Fig. 3.
Vehicle Speed Sensor (VSS)	On rear side of transmission.
Wheel Speed Sensor (Front)	One on middle of each steering knuckle.
Wheel Speed Sensor (Rear)	On differential or each wheel disc backing plate.

SOLENOIDS & SOLENOID VALVES

SOLENOIDS & SOLENOID VALVES LOCATION

Component	Location
ABS Solenoids	On electronic brake control module.
A/T Shift Lock Control Solenoid (A/T)	Forward of shift control lever.
Brake Pressure Modulator Valve	On left side of engine compartment.
Evaporative Emission (EVAP) Canister Purge Solenoid Valve (3.8L VIN K)	Right front of engine, next to injector No. 2.
Evaporative Emission (EVAP) Canister Purge Solenoid Valve (5.7L VIN G)	On left side of engine, on intake manifold. See Fig. 3.
Evaporative Emission (EVAP) Canister Vent Solenoid Valve (3.8L VIN K)	On top right side of engine.
Evaporative Emission (EVAP) Canister Vent Solenoid Valve (5.7L VIN G)	Under floor pan, forward of fuel tank.
Exhaust Gas Recirculation (EGR) Valve (3.8L VIN K)	On front left side of engine. See Fig. 1.
Reverse Lockout Solenoid (M/T)	On left side of transmission.
Secondary Air Injection Bleed Solenoid Valve	On right front frame rail.

Skip Shift Solenoid	On center left side of transmission.
Torque Converter Clutch (TCC) Solenoid	On right side of transmission.

SWITCHES

SWITCHES LOCATION

Component	Location
Back-Up Lamp Switch (M/T)	On side of transmission.
Clutch Pedal Position Switch	On clutch pedal bracket.
Cruise Control/Clutch Switch	On clutch pedal bracket.
Cruise Control Release/Brake Switch	On brake pedal bracket.
Engine Oil Level Switch (3.8L VIN K)	In left side of oil pan. See Fig. 1.
Engine Oil Level Switch (5.7L VIN G)	In right side of oil pan.
Park Brake Switch	At base of parking brake lever.
Park/Neutral Position Switch	Under console, near shift control lever.
Seat Belt Switch	In driver's seat belt buckle.
Second Gear Start Switch	Behind center of dash, above HVAC control head.
Stoplamp/TCC Switch	On brake pedal bracket.

MISCELLANEOUS

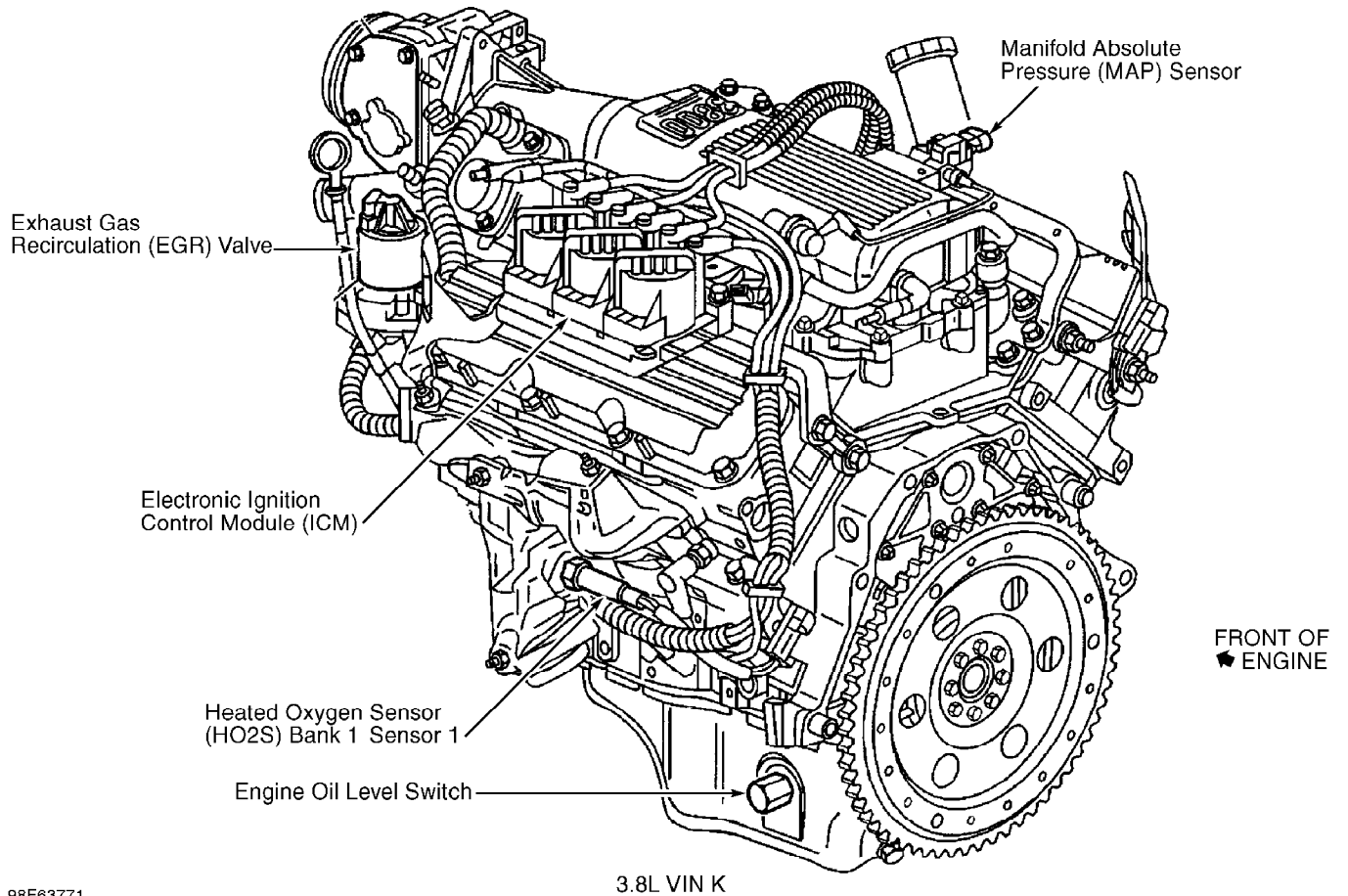
MISCELLANEOUS LOCATION

Component	Location
A/C Clutch Diode (3.8L VIN K)	In engine harness, near breakout to fuel injector No. 2.
A/C Clutch Diode (5.7L VIN G)	In A/C compressor clutch wiring harness.
Blower Resistor	In HVAC module.
Data Link Connector (DLC)	Under dash, to right of steering column. See Fig. 7.
Horn	Below right headlight.
Ignition Coils (3.8L VIN K)	On top left side of engine. See Fig. 2.

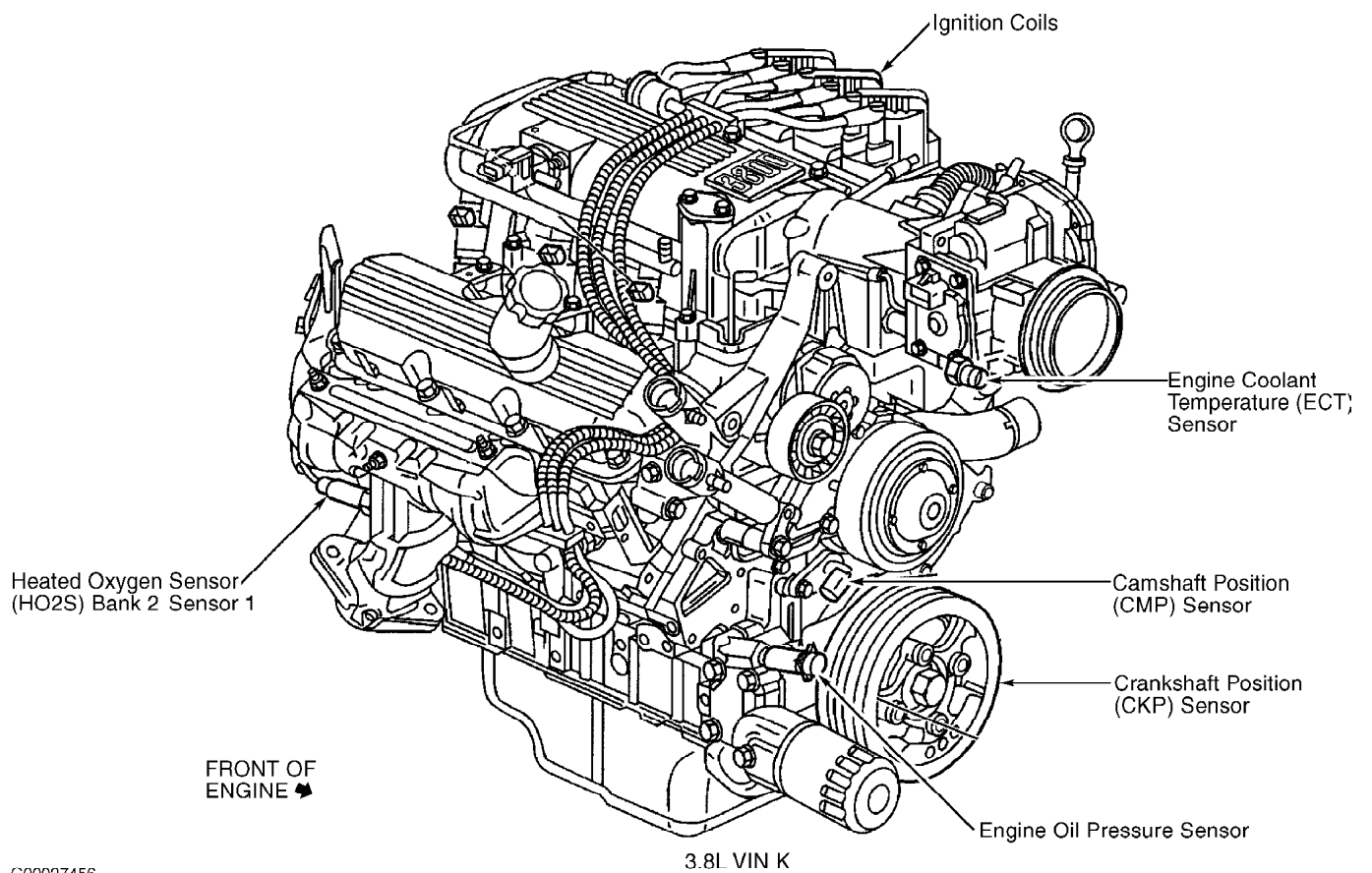
Ignition Coils (5.7L VIN G)	On valve cover, on top of each cylinder. See Fig. 3.
Isolation Diode (Wipers)	In forward lamp harness, near base of steering column.

COMPONENT LOCATION GRAPHICS

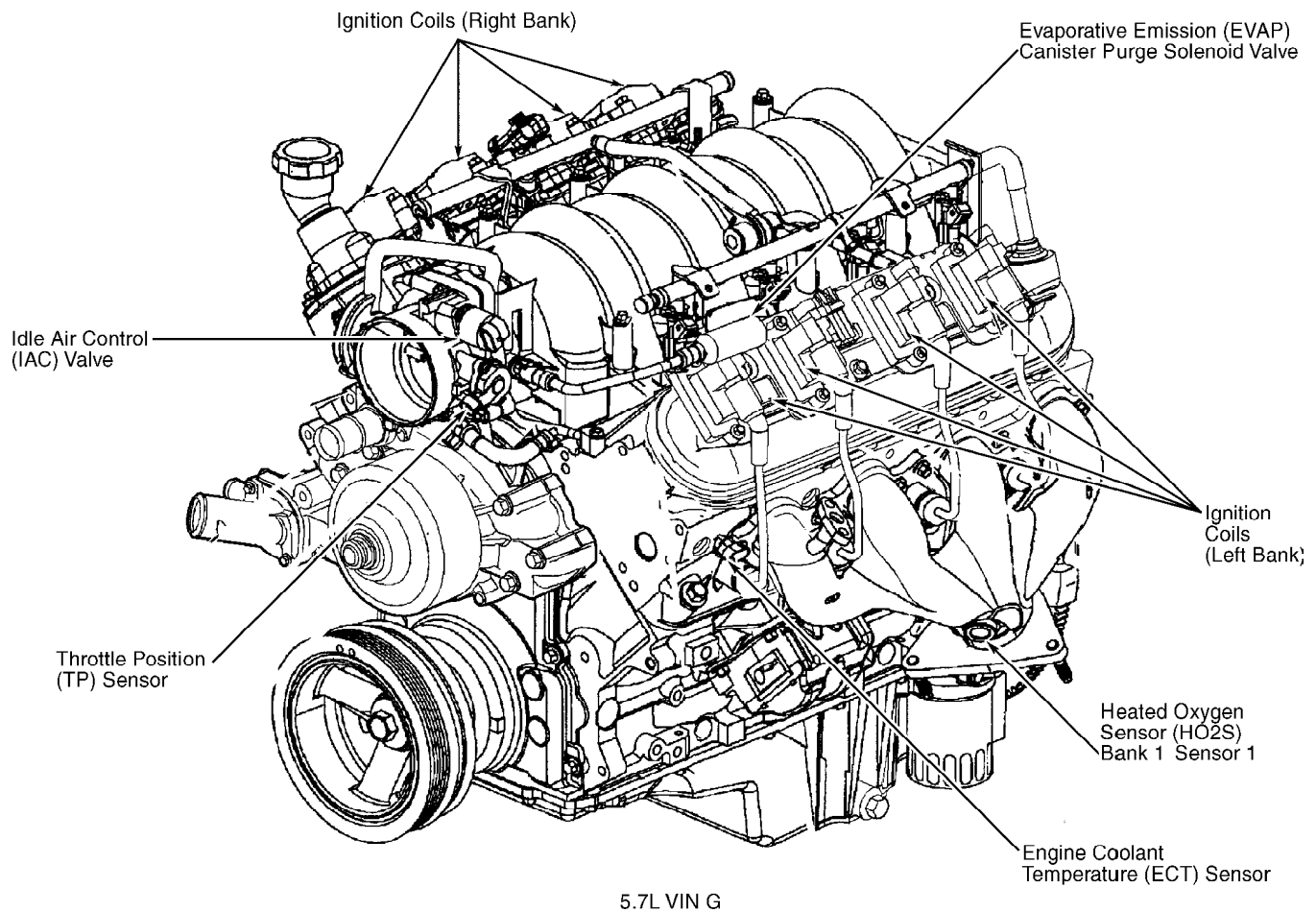
NOTE: Figures may show multiple component locations. Refer to appropriate table for proper figure references.



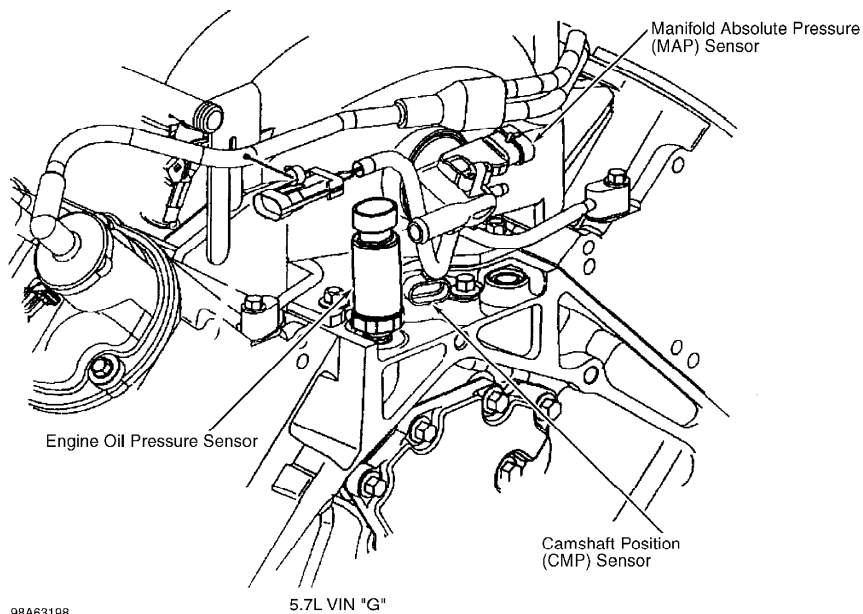
98F63771
 Fig. 1: Left Rear Of Engine (3.8L VIN K)
 Courtesy of General Motors Corp.



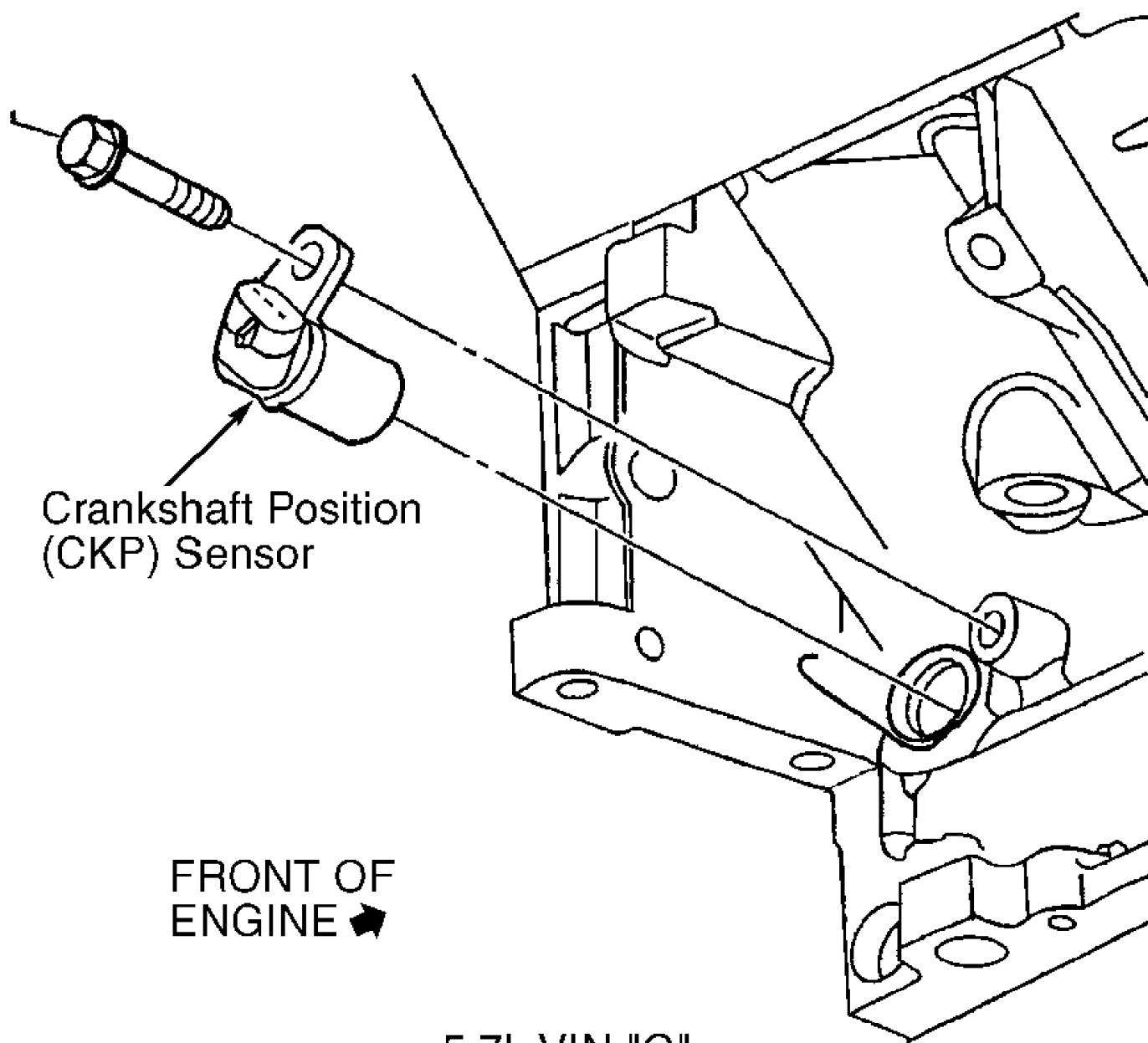
G00027456
Fig. 2: Right Front Of Engine (3.8L VIN K)
Courtesy of General Motors Corp.



G00027457
 Fig. 3: Left Front Of Engine (5.7L VIN G)
 Courtesy of General Motors Corp.



98A63198
 Fig. 4: Rear Of Engine (5.7L VIN G)
 Courtesy of General Motors Corp.



Crankshaft Position
(CKP) Sensor

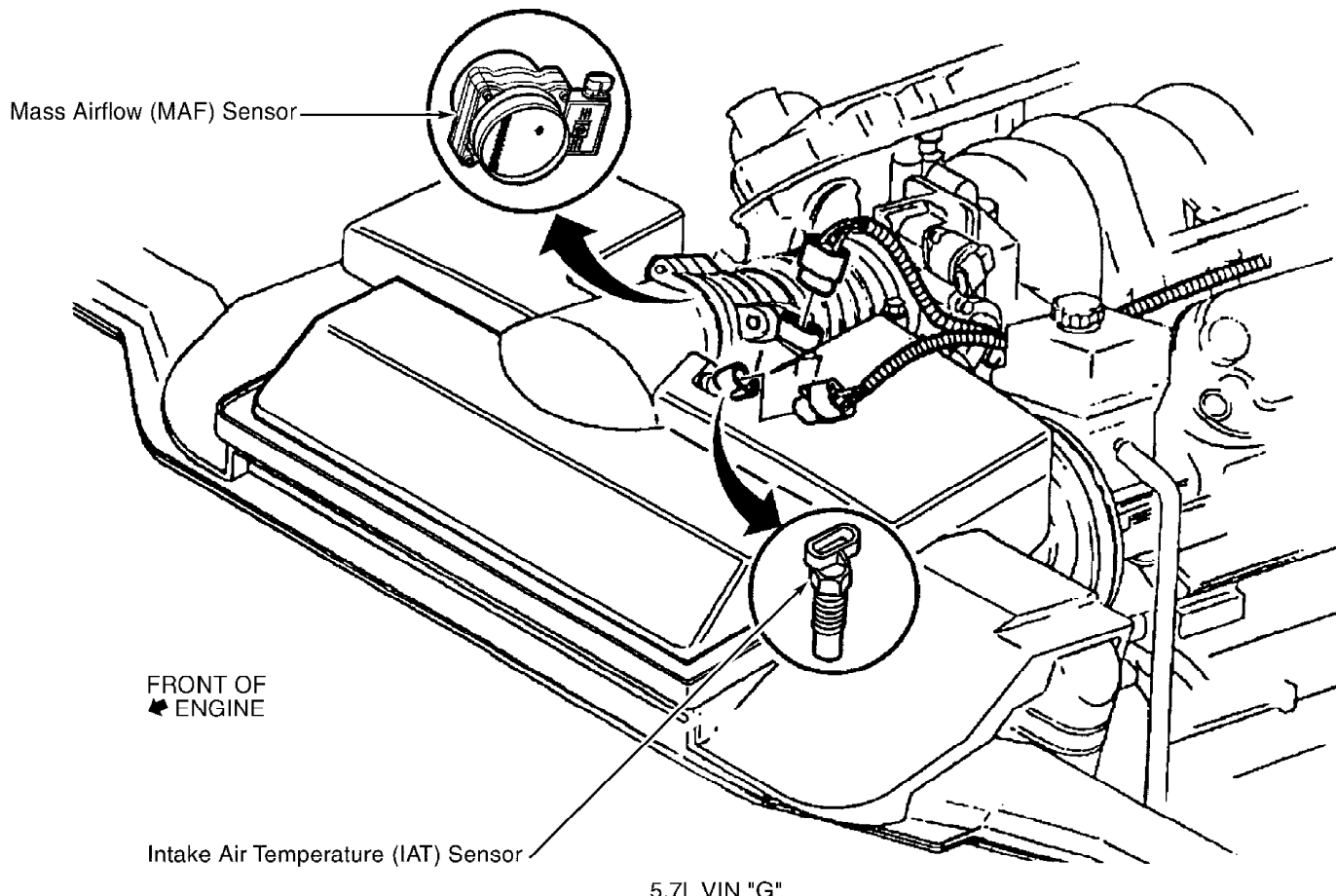
FRONT OF
ENGINE ➡

5.7L VIN "G"

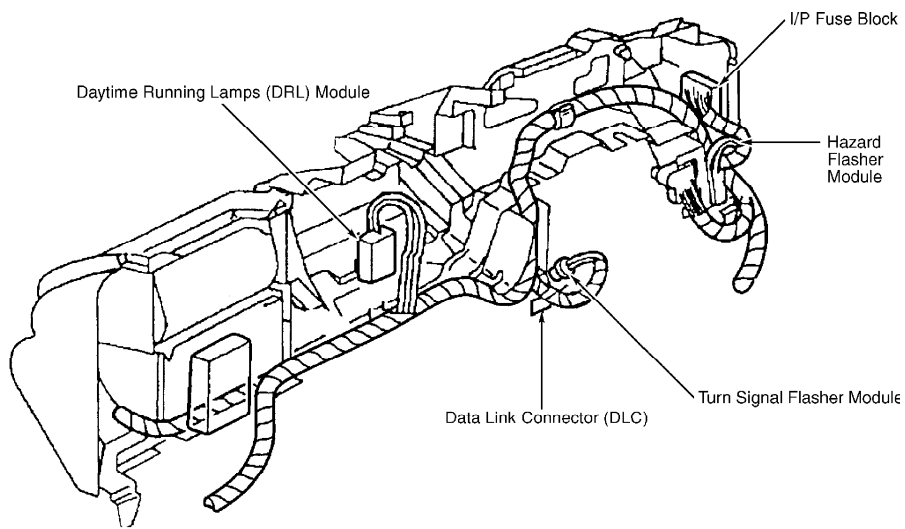
98B63199

Fig. 5: Right Rear Of Engine (5.7L VIN G)

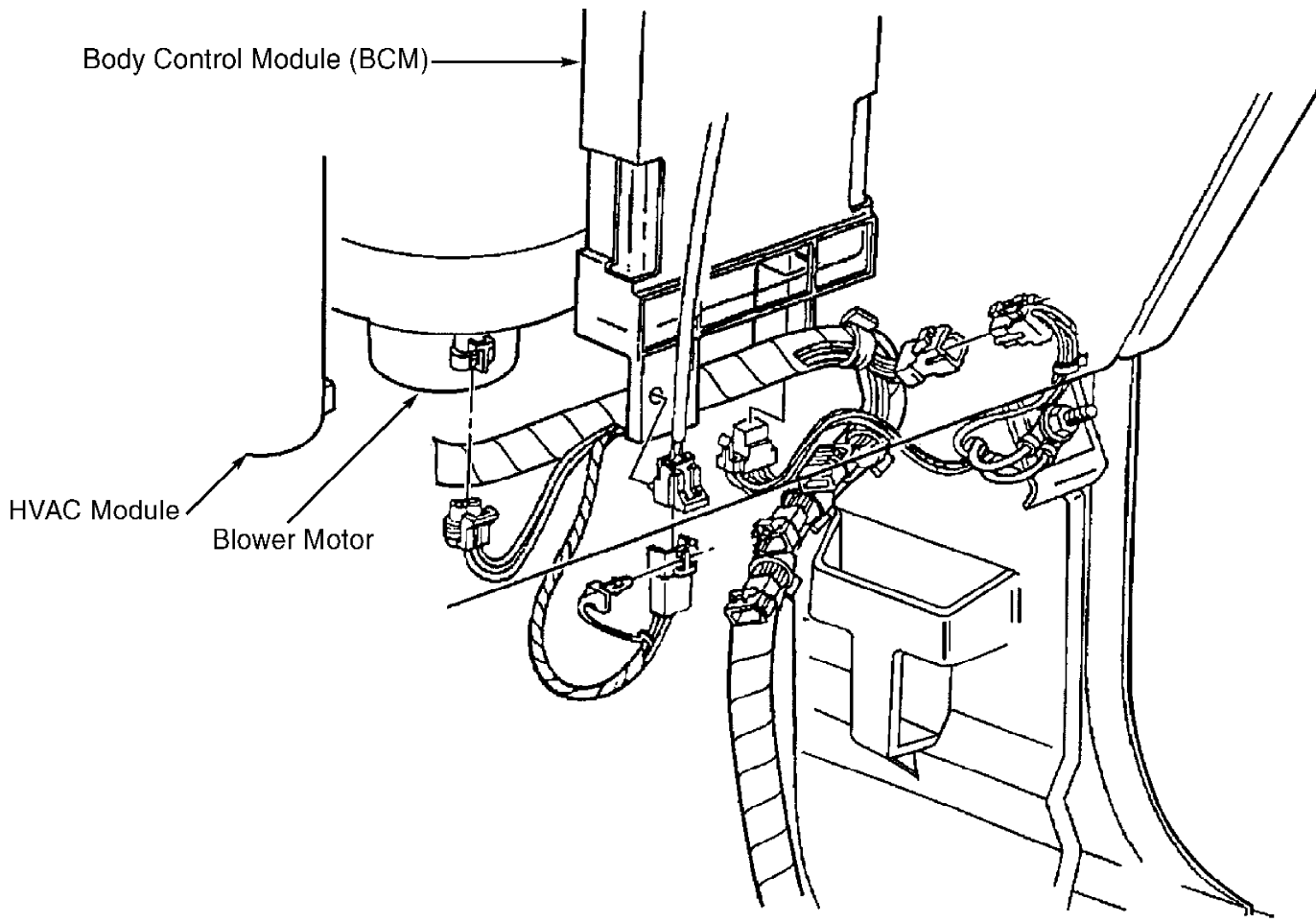
Courtesy of General Motors Corp.



98E63200
 Fig. 6: Front Of Engine Compartment (5.7L VIN G)
 Courtesy of General Motors Corp.



G00027458
 Fig. 7: Rear Of Dash
 Courtesy of General Motors Corp.



LOWER RIGHT KICK PANEL

98G63202
Fig. 8: Right Kick Panel
Courtesy of General Motors Corp.